



Superintendent Brief June 10th, 2022

Dear Ida Public Schools Community:

The projects and costs on the Bond proposal affect everyone in our district and community. Parents and community members have asked ways they could help.

- Please vote!
- Enter into your phone calendar - June 23rd, 2022 Township Office Walk-in voting begins.
- Enter in your phone calendar - August 2, 2022 Election Day – remind a friend to vote.
- Register for an absentee ballot especially if you will be tied up at the fair or on vacation.
- Join (Like) the Bond Facebook page to keep up with the latest, especially during the summer.
- Share the Bond Facebook page with alum and friends. Word of mouth from those we trust is the best.

June 23, 2022 Voters can walk in and vote. For Ida township: Tuesdays and Thursdays 9-4. You will vote absentee. You can register to vote in person with the clerk even on election day. Each township will have different hours of availability. Please check their websites.

With inflation, it is a scary time. Truth be told, it is never a good or easy time to ask for money. It is personal and hard earned. With each year that passes, the costs are rising, and we will still have the same needs but will pay more to take care of the needs in the future. If the Bond passes, you will not see the cost until your December tax bill. In January, we were fortunate we did not have to move middle school students to a different location for the remainder of the year due to mechanical failures. The added cost and disruption to the middle school schedule would have been significant. Please see the January Superintendent Brief.

If you have questions regarding the Bond Proposal, check out the in-depth Q and A on the Bond page on the Ida website or contact one of the following Ida Public Schools Building Committee members:

Matt Darr	darr@idaschools.org
Tim Leonard	leonard@idaschools.org
Sherry Locke	locke@idaschools.org
Mike Mero, Jr	mero@idaschools.org
Jeremy Nadeau	jeremy.nadeau@dentwizard.com
Holly Nartker	hollynartker@ymail.com
Jeremy Potter	potter@idaschools.org
Stefanie Rauch	Stefanie.rauch1@gmail.com
Kelly Riley	riley@idaschools.org
Heather Schafer	schafer@idaschools.org
Jessica Thompson	thompson@idaschools.org
Tera Shaffer	terashafferphoto@gmail.com
Sue Kreps	suekreps1@gmail.com
Jimmy McMonagle	j.mcmonagle@hotmail.com
Wendy Hiteshew	hiteshew@idaschools.org
Supervisor Paul Metz	supervisor@idatownship.org
Tim Mata	timtam17@frontier.com
Chris Curry	chriscurry100@gmail.com
Senator Dale Zorn	dwz@d-pcomm.net
Bryan Shaffer	shafferbryan@yahoo.com
Steve Stotz	734-915-4280
Dale Brunt	313-550-4565
Bob Cherry	cherry@idaschools.org

IDA PUBLIC SCHOOLS **AUGUST 2, 2022 BOND**

FOR MORE
INFORMATION



\$43,305,000 MILLION | 4.94 MILLS NET INCREASE | VOTE TUESDAY, AUGUST 2, 2022

WHAT'S ON THE **BALLOT?**



Our community will have the opportunity to vote on an Ida Public Schools bond proposal on the **August 2, 2022** election ballot. If approved, it would **provide \$43,305,000 for building & site improvements** to address identified and ongoing facility needs based on facility assessments and community input. If approved by voters, the 2022 bond millage would increase the millage rate by 4.94 mills.

QUESTIONS & INFORMATION

More information is available on school district website: www.idaschools.org/bondinfo

Contact Superintendent Sandra Kreps:
kreps@idaschools.org through June 30, 2022.

Beginning July 1, 2022 contact Dave Eack:
eack@idaschools.org.

ELECTION DAY 08.02.2022



HIGH SCHOOL

- Update and expand biology and chemistry labs and upgrade physics' room and lab
- New counseling/career and college ready center
- Girl's locker room addition (In addition to serving our athletes, will allow us to have districts here)
- 1,900 square foot entrance addition to the gymnasium with concessions, tickets, bathrooms, and wall of fame
- New double entry main entrance that enters directly into a reconfigured main office with workstation
- Replace all classroom unit ventilators (Current units are original and parts not available)
- Update targeted classrooms, ceilings, paint, millwork added storage
- New lockers, interior doors and LED lighting and controls

MIDDLE SCHOOL

- Update 6/7/8th grade science labs
- New double entry main entrance that enters directly into a reconfigured main office
- Replace 35 year old existing boiler (Parts are not available)
- Replace all unit ventilators (Current units are 68 years old and parts not available)
- Replace exterior 5/6 wing and 7/8 wing walls
- Reconstruct shifting interior classroom walls in 7/8 wing and interior walls that are eroding and not watertight
- New lockers, interior doors and LED lighting and controls
- Update targeted classrooms, ceilings, paint, and millwork, added storage

ELEMENTARY SCHOOL

- Pre-K education expansion
- 7 classroom addition with corridor and bathrooms
- New double entry main entrance that enters directly into a new main office and offices
- Every classroom, hallway and office with new floors, ceilings, millwork, and doors
- Replace one 47 year old boiler and all piping (Piping is original 72 years old)
- Replace all unit ventilators (Current units are original and replacement parts are not available)
- New playgrounds
- New lockers and LED lighting and controls
- Multi-purpose room/full size gym addition for curriculum and after hour athletic, rec and community use



Check out the Facebook page for up-to-date information.

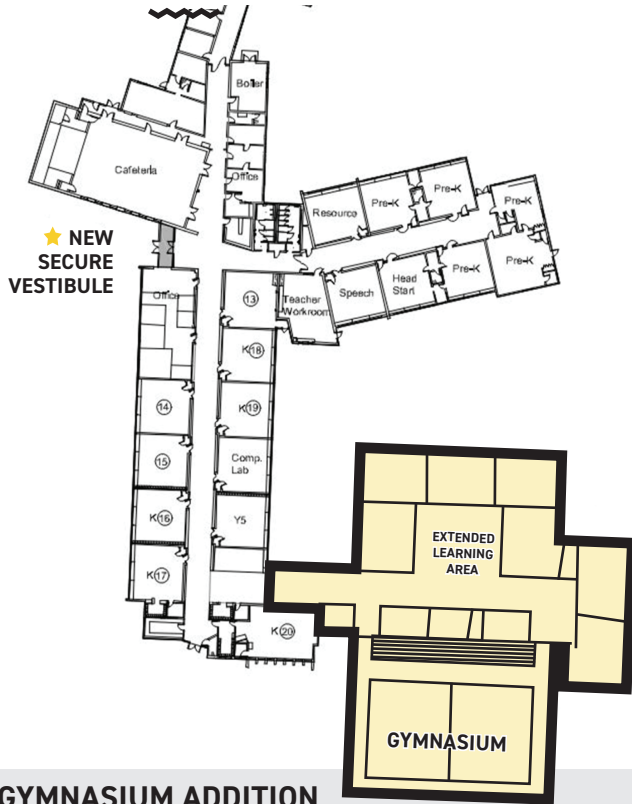
IDA PUBLIC SCHOOLS AUGUST 2, 2022 BOND

FOR MORE INFORMATION



\$43,305,000 MILLION | 4.94 MILLS NET INCREASE | VOTE TUESDAY, AUGUST 2, 2022

ELEMENTARY SCHOOL



CLASSROOMS AND BATHROOM ADDITION , UPDATE EXISTING CLASSROOMS

Refresh classrooms throughout the building with new paint, ceilings where needed, additional storage, and other updates to create a more modern learning environment. Seven new classrooms with a multi-use hallway learning space, allowing for students to spread out for group work multi-class images while being in line of sight. Pre-K education expansion to compete with other districts.



NEW PLAYGROUNDS

New Pre-School and Elementary playgrounds with age appropriate equipment, new substrate, and other safety features.



SECURE ENTRY ★

Building a small addition next to the cafeteria while remodeling two classrooms into a new office allows the school to centralize and control visitor traffic.



IMPROVE BUILDING SYSTEMS

Replace classroom ventilators and update heating and ventilation system, creating a more comfortable learning environment.



Replace 47 year old boiler and all original 72 year old piping for energy efficiency.



Replace old, patched, and worn sections of flooring and concrete.



Replace all older doors for energy efficiency, stronger locks and glass, and barrier-free access.

GYMNASIUM ADDITION



Adding a gym will move all athletic activities out of the cafeteria, allowing for more flexibility for both lunch times and gym class.



The gym addition can also function as a resource space for school concerts, community use, rec department and athletic practice after hours. The addition would also free up the current cafeteria/gym space for the morning Latchkey Program drop-off.



These images are for visualization purposes only - the final design will be completed in collaboration with Ida faculty and community.

IDA PUBLIC SCHOOLS AUGUST 2, 2022 BOND

FOR MORE INFORMATION



\$43,305,000 MILLION | 4.94 MILLS NET INCREASE | VOTE TUESDAY, AUGUST 2, 2022

MIDDLE SCHOOL



CURRENT



CURRENT



POSSIBLE



CURRENT



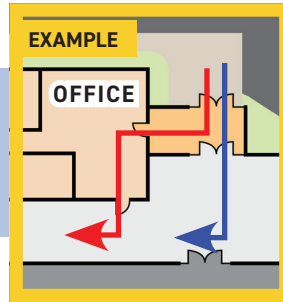
POSSIBLE

UPDATE CLASSROOMS & MORE

Refresh classrooms throughout the building with new paint, ceilings where needed, additional storage, and other updates to create a more modern learning environment.



POSSIBLE



EXAMPLE

OFFICE

STUDENT AM/PM TRAFFIC

DAYTIME VISITOR TRAFFIC

SECURE ENTRY

New double entry main entrance that enters directly into a reconfigured main office; this small addition will direct all visitor traffic into the office while blocking off hallway access during the day.



CURRENT



POSSIBLE

MODERN SCIENCE LABS

Update science labs to current standards for all grades, including new equipment and casework, more storage, and up-to-date safety features.



CURRENT



CURRENT

RECONSTRUCT WING'S EXTERIOR WALLS

To stop the chronic infiltration of water into the building, which has occurred over many years.



CURRENT

IMPROVE BUILDING SYSTEMS

Replace 35 year old boiler and necessary heating pipes for increased energy efficiency.



CURRENT

Replace 68 year old classroom ventilators and update heating and ventilation system; parts can no longer be sourced for repairs.



CURRENT

Upgrade to LED light fixtures and controls for increased energy efficiency.

IDA PUBLIC SCHOOLS AUGUST 2, 2022 BOND

FOR MORE INFORMATION



\$43,305,000 MILLION | 4.94 MILLS NET INCREASE | VOTE TUESDAY, AUGUST 2, 2022

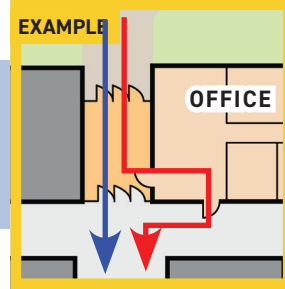
HIGH SCHOOL



POSSIBLE

SECURE ENTRY

New double entry main entrance that enters directly into a reconfigured main office; this small addition will direct all visitor traffic into the office while blocking off hallway access during the day.



STUDENT AM/PM TRAFFIC
DAYTIME VISITOR TRAFFIC



POSSIBLE

GYMNASIUM ADDITION

1,900 square foot entrance addition to the gymnasium with concessions, bathrooms and wall of fame.



POSSIBLE

COUNSELING CENTER

Add a dedicated Counseling Center for students, with private spaces to discuss their future, college possibilities, and more.



CURRENT



CURRENT



POSSIBLE

MODERN SCIENCE LABS

Update physics, chemistry and biology, including new equipment and casework, more storage, and up-to-date safety features.



CURRENT



POSSIBLE

UPDATE CLASSROOMS & MORE

Refresh classrooms throughout the building with new paint, ceilings where needed, additional storage, and other updates to create a more modern learning environment.



CURRENT



CURRENT

IMPROVE BUILDING SYSTEMS

Replace classroom ventilators and update heating and ventilation system, creating a more comfortable learning environment (parts cannot be sourced for repairs). Upgrade to LED light fixtures and controls for increased energy efficiency.



NEW GIRLS LOCKER ROOM

To create an equal locker room space for girls athletics, which will allow the school to host for districts and regionals.



CURRENT



CURRENT

UPDATE WELDING SHOP

Provide upgrades to ventilation, electrical and mechanical systems. Provide new welding booths.

RECONSTRUCT WING'S EXTERIOR WALLS

To stop the chronic infiltration of water into the building, which has occurred over many years.

IDA PUBLIC SCHOOLS AUGUST 2, 2022 BOND

FOR MORE INFORMATION



\$43,305,000 MILLION | 4.94 MILLS NET INCREASE | VOTE TUESDAY, AUGUST 2, 2022



BALLOT LANGUAGE

Shall Ida Public School District, Monroe County, Michigan, borrow the sum of not to exceed Forty Three Million Three Hundred and Five Thousand Dollars (\$43,305,000.00) and issue its unlimited tax general obligation bonds therefore, for the purpose of defraying all or part of the cost of:

Erecting, completing, remodeling, and equipping or reequipping school buildings, including playgrounds and parts of or additions to those facilities; furnishing and refurbishing new and remodeled school buildings; preparing, developing, or improving sites, or parts of or additions to sites, for school buildings, including playgrounds; acquiring, installing, or equipping or reequipping school buildings for technology?

YES NO

The following is for informational purposes only:

The estimated millage that will be levied for the proposed bonds in the year 2023, under current law, is 4.94 mills (\$4.94 per \$1,000 of taxable valuation). Thirty (30) years is the maximum number of years that the proposed bonds may be outstanding, exclusive of any refunding. The estimated simple average annual millage anticipated to be required to retire this bond debt is 4.71 mills (\$4.71 per \$1,000 of taxable valuation).

The school district currently has \$0 of qualified bonds outstanding and \$0 of qualified loans outstanding under the State School Bond Qualification and Loan Program. The school district does not expect to borrow from the program to pay debt service on these bonds. The estimated computed millage rate may change based on changes in certain circumstances.

(Pursuant to State law, expenditures of bond proceeds must be audited, and the proceeds cannot be used for repair or maintenance costs, teacher, administrator or employee salaries, or other operating expenses.)

HOW WOULD THE BOND PROPOSAL IMPACT MY PROPERTY TAXES?

HOME (SEV) TAXABLE VALUE	HOME MARKET VALUE	ESTIMATED DAILY COST	ESTIMATED MONTHLY COST	ESTIMATED YEARLY COST
\$50,000	\$100,000	\$0.68	\$20.58	\$247
\$100,000	\$200,000	\$1.35	\$41.17	\$494
\$150,000	\$300,000	\$2.03	\$61.75	\$741



CALCULATE YOUR CONTRIBUTION

Use the QR code or enter the link below to access an online tax calculator we created that estimates the impact of August's ballot proposal on a your annual tax bill. This will help you see the actual amount of increase for each household.

tinyurl.com/IdaCalcAug22



Michigan Homestead Property Tax Credit – Households that pay homestead property taxes greater than 3.2% of their annual income may be eligible for Michigan's Homestead Property Tax Credit. **Eligible households may deduct up to 60% (up to 100% for senior citizens, please see the senior credit table) of the millage increase cost up to a \$1,500 Homestead Tax Credit limit.** The eligibility for the credit begins to decrease after household income exceeds \$51,001 and ends completely after the household income exceeds \$60,001.

TAX RELIEF OPTIONS FOR VOTERS

Please see below the general reduction table and senior credit table:

GENERAL CREDIT REDUCTION		SENIOR CREDIT	
RESOURCES	% OF CREDIT	RESOURCES	% OF CREDIT
\$51,000	100%	\$21,000	100%
\$51,001	90%	\$21,001	96%
\$52,001	80%	\$22,001	92%
\$53,001	70%	\$23,001	88%
\$54,001	60%	\$24,001	84%
\$55,001	50%	\$25,001	80%
\$56,001	40%	\$26,001	76%
\$57,001	30%	\$27,001	72%
\$58,001	20%	\$28,001	68%
\$59,001	10%	\$29,001	64%
\$60,001	0%	\$30,001	60%

IDA PUBLIC SCHOOLS AUGUST 2, 2022 BOND

FOR MORE
INFORMATION



\$43,305,000 MILLION | 4.94 MILLS NET INCREASE | VOTE TUESDAY, AUGUST 2, 2022

HOW WOULD THE BOND PROPOSAL IMPACT MY PROPERTY TAXES?

ESTIMATED TAX INCREASE: 4.94 MILLS

ESTIMATED MARKET VALUE OF HOME	ESTIMATED TAXABLE VALUE OF HOME*	ESTIMATED ANNUAL COST	ESTIMATED MONTHLY COST	ESTIMATED DAILY COST
\$50,000	\$25,000	\$123.50	\$10.29	\$0.34
\$100,000	\$50,000	\$247.00	\$20.58	\$0.68
\$120,000	\$60,000	\$296.40	\$24.70	\$0.81
\$140,000	\$70,000	\$345.80	\$28.82	\$0.95
\$160,000	\$80,000	\$395.20	\$32.93	\$1.08
\$180,000	\$90,000	\$444.60	\$37.05	\$1.22
\$200,000	\$100,000	\$494.00	\$41.17	\$1.35
\$229,396	\$114,698	\$566.61	\$47.22	\$1.55
\$240,000	\$120,000	\$592.80	\$49.40	\$1.62
\$260,000	\$130,000	\$642.20	\$53.52	\$1.76
\$280,000	\$140,000	\$691.60	\$57.63	\$1.89
\$300,000	\$150,000	\$741.00	\$61.75	\$2.03
\$320,000	\$160,000	\$790.40	\$65.87	\$2.17

The table shows the estimated taxpayer impact of the bond proposition based on various taxable values.

Generally, a property's taxable value should not be more than 50% of the property's market value.



CALCULATE YOUR CONTRIBUTION

Use the QR code or enter the link below to access an online tax calculator we created that estimates the impact of August's ballot proposal on a your annual tax bill. This will help you see the actual amount of increase for each household.

tinyurl.com/IdaCalcAug22

*Taxable value shown at 50% of the market value of the home. However, the taxable value should not exceed 50% of the market value, and is often less than 50% of the market value.

The above figures are based on esimated bond interest rates and taxable value growth rates.

Zillow shows an average home value in Ida of \$229,396 as of January 31, 2021, which would equate to a taxable value of \$114,698 or less.

IDA PUBLIC SCHOOLS AUGUST 2, 2022 BOND

FOR MORE
INFORMATION



\$43,305,000 MILLION | 4.94 MILLS NET INCREASE | VOTE TUESDAY, AUGUST 2, 2022

Voter Information



Our community will have the opportunity to vote on an Ida Public Schools bond proposal on the **August 2, 2022** election ballot. If approved, it would **provide \$43,305,000 for building & site improvements** to address identified and ongoing facility needs based on facility assessments and community input. If approved by voters, the 2022 bond millage would increase the millage rate by 4.94 mills.

QUESTIONS & INFORMATION

More information is available on school district website: www.idaschools.org/bondinfo

Contact Superintendent Sandra Kreps: kreps@idaschools.org through June 30, 2022.

Beginning **July 1, 2022** contact Dave Eack: eack@idaschools.org.



Check out the Facebook page for up-to-date information.

\$43,305,000 BOND

The District would sell bonds totaling \$43,305,000.

PROPOSED PROJECT SCOPE

Visit the district website for a full scope of projects for each school in the district:



WHEN CAN I VOTE?

On/after **June 23, 2022**, voters can walk in and vote absentee. For Ida Township: Tuesdays and Thursdays 9pm-4pm. You can register to vote in person with the clerk even on election day. Each township will have different hours of availability. Please check their websites. In-person, polls are open on **Tuesday, August 2, 2022**, from 7am -8pm

HOW CAN I VOTE ABSENTEE?

You can request an absentee ballot application online at Michigan.gov/vote or if you are within two weeks of August 2, visit your local Clerk's office to request and submit a ballot on the same day. Online and mail requests for an absent voter ballot must be received by your Township or City Clerk no later than 5 p.m. the Friday before the election. **Absentee ballots must be made available at your local Township or City Clerk office by June 23, 2022.**

NOT REGISTERED TO VOTE?

Visit Michigan.gov/vote to register online or visit your local Clerk's office to register in person up until/on election day.

The following is the actual ballot language for the August 2, 2022 election:

Shall Ida Public School District, Monroe County, Michigan, borrow the sum of not to exceed Forty Three Million Three Hundred and Five Thousand Dollars (\$43,305,000.00) and issue its unlimited tax general obligation bonds therefore, for the purpose of defraying all or part of the cost of:

Erecting, completing, remodeling, and equipping or reequipping school buildings, including playgrounds and parts of or additions to those facilities; furnishing and refurbishing new and remodeled school buildings; preparing, developing, or improving sites, or parts of or additions to sites, for school buildings, including playgrounds; acquiring, installing, or equipping or reequipping school buildings for technology?